



FRANKFORD



DESIGN ON PURPOSE



UNDER ONE UMBRELLA

Our craftsmanship
casts a long shadow.
Born more than 125
years ago, Frankford
Umbrellas stays
committed to the idea
that true luxury is in the
things that last.



SHADE

A close-up, low-angle shot of the central joint and ribs of a dark grey umbrella. The umbrella is set against a vibrant red background. The central shaft is visible, with a silver-colored metal band engraved with the word 'FRANKFORD'. The ribs extend outwards, and the top of the canopy is visible at the bottom of the frame, showing a red fabric with a white outline.

**without a shadow
of a doubt.**

Durability is the truest form of sustainability. Precision engineering, marine-grade materials, and meticulous construction ensure our umbrellas last season after season, through wind, salt, rain, and sun.

Table of Contents

Classic Umbrellas	07
The Monterey	09
The Greenwich	15
The Catalina	21
Cantilever Umbrellas	27
The Aurora and Aurora Fiberglass	29
The Eclipse®	35
Giant Umbrellas	41
The Nova	43
The Giant Greenwich	49
The Giant Monterey	55
Cabanas	61
The Marella Cabana	63
Shade Accents	69
Our Fabrics	74
Shade Designer	81
Contact Us	88

Our Collections

Classic Umbrellas

Where some umbrella designers chase trends, others define the standard.

Our classic, center-post umbrellas combine enduring silhouettes with commercial-grade construction, delivering reliable shade for patios, restaurants, resorts, and everything in between. Classic is a title that is earned.

Cantilever Umbrellas

Good shade travels well.

When coverage needs to move, our cantilever umbrellas lead the way. Designed for versatility and built with commercial-grade strength, these umbrellas provide adaptable shade ideal for any sophisticated outdoor environment that demands flexibility without compromise.

Giant Umbrellas

More coverage. More confidence.

Frankford's giant umbrellas combine impressive scale with refined design, creating cohesive coverage for restaurants, resorts, parks, and commercial environments where aesthetics and performance both matter.

Cabanas

Our cabanas create immersive shade environments designed for resorts, pool decks, and outdoor spaces that prioritize privacy, luxury, and lasting performance.

Shade Designer: Customize your shade

Design with clarity before you commit. The Frankford Shade Designer lets you explore key combinations of fabrics, finishes, and details so you can better understand how your choices shape the space.



Classic Umbrellas

Monterey
Greenwich
Catalina

CLASSIC



Classic Umbrellas

Where some umbrella designers chase trends, others define the standard.

Our classic, center-post umbrellas combine enduring silhouettes with commercial-grade construction, delivering reliable shade for patios, restaurants, resorts, and everything in between.

Classic is a title that is earned.



The Monterey

Strength, made graceful. Crafted with resilient fiberglass ribs that flex in the wind and a durable aluminum center pole, the Monterey delivers commercial-grade strength with refined, design-forward appeal. Available in multiple sizes, finishes, and lift methods, the Monterey is crafted to perform beautifully season after season.



Shade without a shadow of a doubt.



The Monterey

The Monterey's thick fiberglass ribs are designed to flex in the wind instead of fighting it. That controlled flexibility reduces stress on the frame, helping the umbrella withstand everyday wear and wind gusts of up to 40mph, while still allowing you to effortlessly open and close the umbrella.





Premium Shade Your Way

Underneath the Monterey's resilient fiberglass ribs and extruded aluminum pole is a world of choice. Choose your size, lift method, frame finish, fabric, and finishing accents: because your shade should be as personal as it is durable.



True luxury is in the things that last.



The Greenwich

Refined on the surface. Engineered underneath. The Greenwich umbrella pairs a sleek aluminum frame and design-forward detailing with effortless functionality, delivering elevated shade for spaces that need beauty with a strong backbone.



Shade without a shadow of a doubt.



The Greenwich

Available in multiple sizes and frame finishes, it's built to complement upscale environments while performing season after season.





Open to Opportunity

The Greenwich's easy-glide pulley system delivers smooth, controlled lift with minimal resistance, engineered for daily use.



True luxury is in the things that last.



The Catalina

It's a classic for a reason. Built with a durable fiberglass frame and extruded aluminum pole designed to help you move it intelligently in the wind, the Catalina offers dependable strength wrapped in clean, classic lines. Offered in multiple frame builds with premium powder-coated finishes and fabric options, it delivers resilient performance wrapped in timeless design.



Shade without a shadow of a doubt.



The Catalina

With its classic curved canopy and customizable finishes and fabrics, it delivers reliable shade with effortless, no-nonsense operation.





The Catalina

Durable, easy to operate, and available in a range of finishes and fabrics, the Catalina delivers dependable shade with added flexibility built right in.



True luxury is in the things that last.

Cantilever Umbrellas

Aurora
Aurora Fiberglass
Eclipse®

CANTILEVER



Cantilever Umbrellas

Good shade travels well.

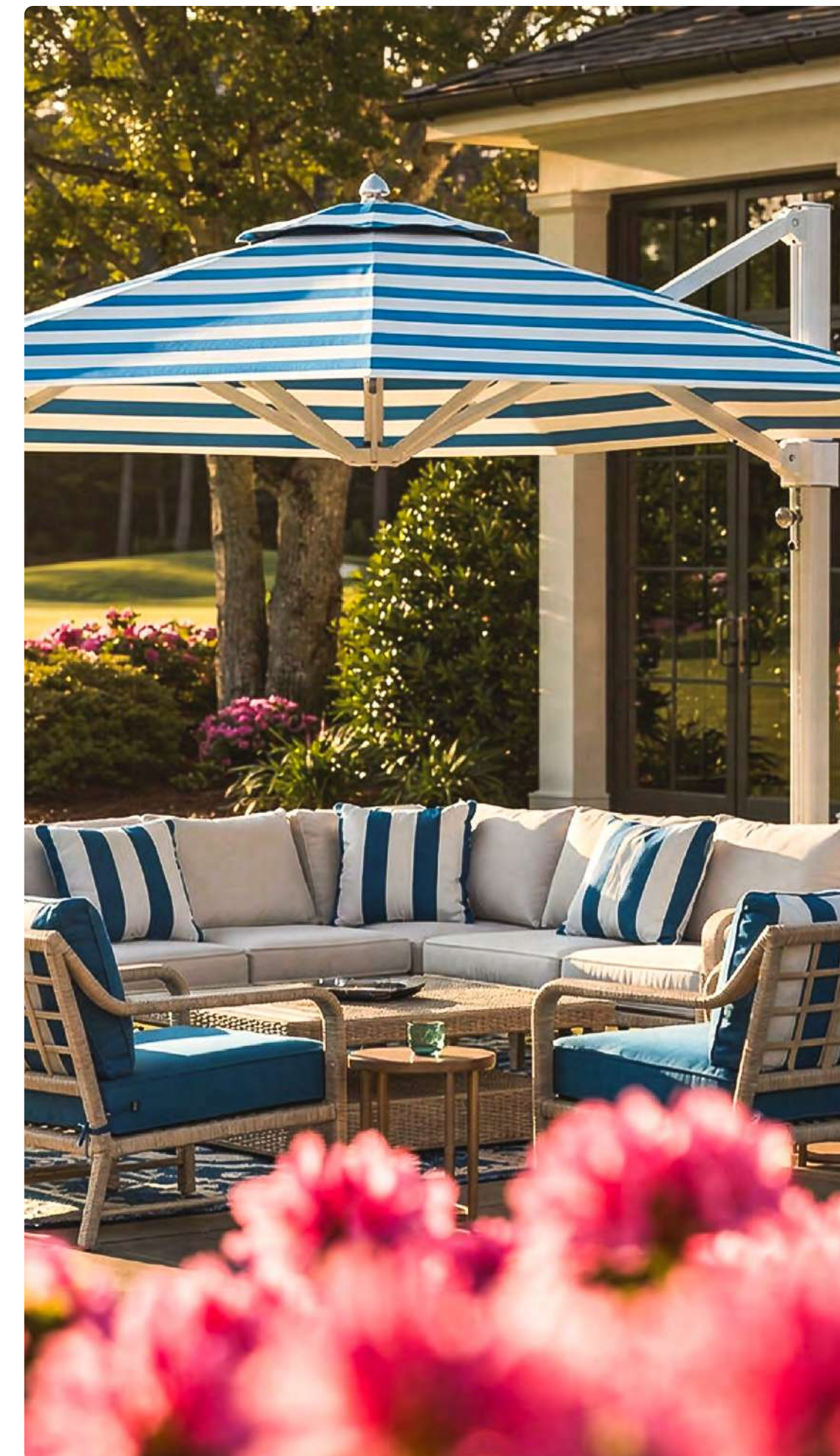
When coverage needs to move, our cantilever umbrellas lead the way. Designed for versatility and built with commercial-grade strength, these umbrellas provide adaptable shade ideal for any sophisticated outdoor environment that demands flexibility without compromise.



The Aurora and Aurora-F

Architectural in presence and purposeful in design, the Aurora maximizes usable space without compromising structural integrity.

Shade without a shadow of a doubt.



The Aurora and Aurora-F

The Aurora eliminates the traditional center post, delivering open, uninterrupted shade supported by precision-built aluminum or fiberglass ribs. Its Infinity Tilt system allows effortless repositioning as the sun moves.





Full Circle Control

Rotate the canopy a complete 360 degrees around its mast to reposition shade without moving furniture. The result is uninterrupted flexibility, engineered to adapt as the light shifts.



True luxury is in the things that last.



The Eclipse®

Total control. Structural confidence. The Eclipse® pairs 360° rotation with an Infinity Tilt system, allowing precise shade positioning from morning light to late afternoon sun.

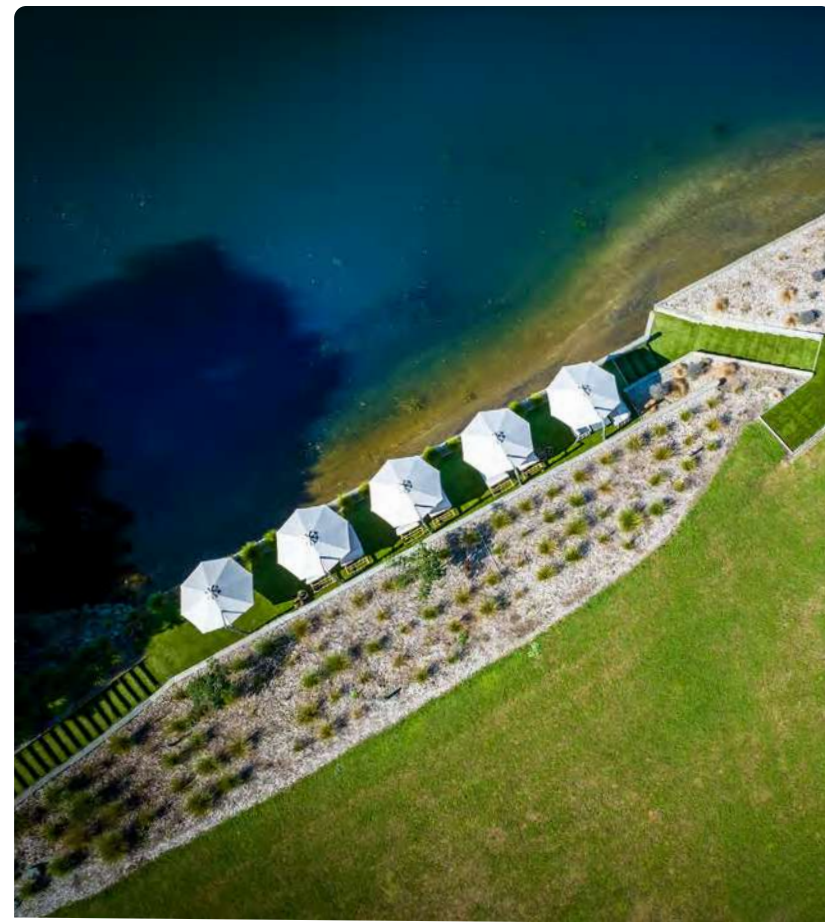
Shade without a shadow of a doubt.



The Eclipse®

Beneath its clean, modern profile is a marine-grade, corrosion-resistant aluminum frame reinforced with heavy-gauge extruded aluminum and stainless-steel components.





Customize Your Shade

Make it yours before you call it yours. Choose your finish, fabric, and configuration to create an Eclipse® that complements your environment while delivering complete positional control.



True luxury is in the things that last.

Giant Umbrellas

Nova
Giant Greenwich
Giant Monterey

GIANT



Giant Umbrellas

More coverage. More confidence. Frankford's giant umbrellas combine impressive scale with refined design, creating cohesive coverage for restaurants, resorts, parks, and commercial environments where aesthetics and performance both matter.



The Nova

Think bigger. The Nova delivers expansive commercial-grade coverage, supported by a commanding 4-inch mast and reinforced extruded aluminum ribs beneath a 9 oz. marine-grade acrylic canopy.



Shade without a shadow of a doubt.



The Nova

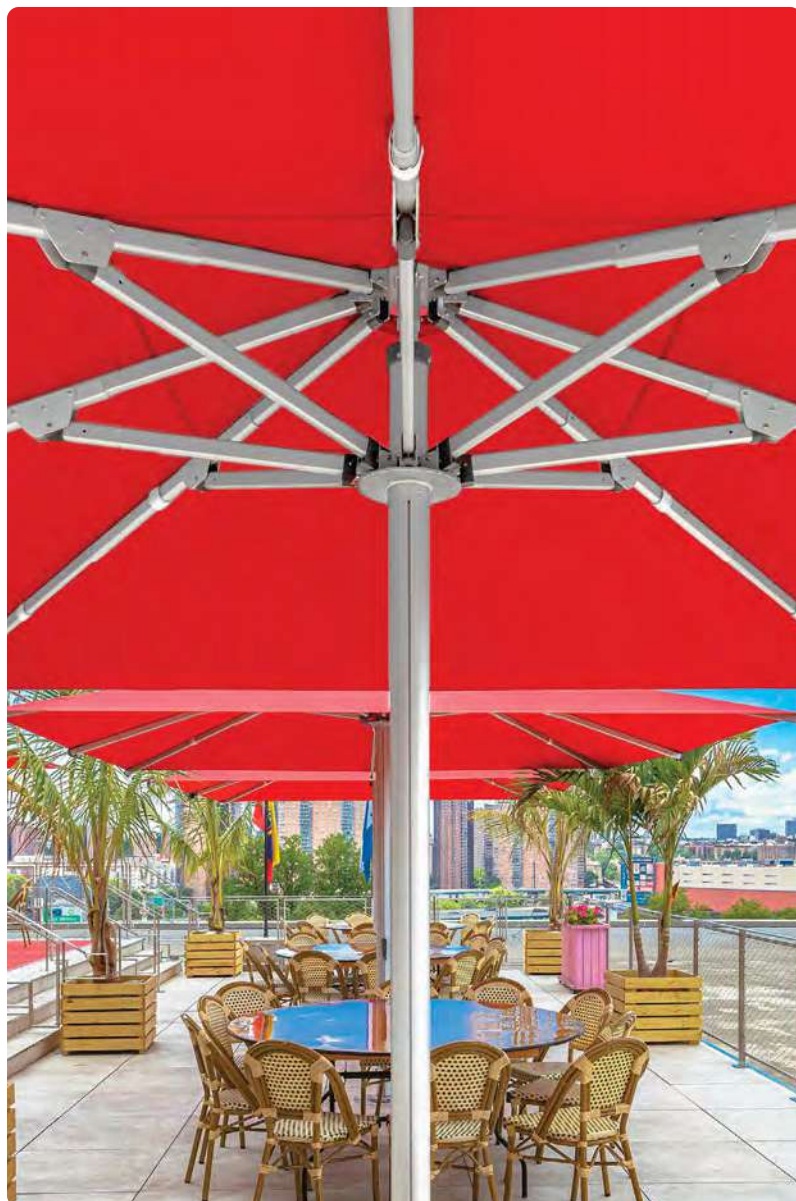
A commercial telescopic crank allows the canopy to close vertically — eliminating the need to move furniture below — while semi-permanent and non-permanent mounting options offer installation flexibility rarely found at this scale.





Full-Scale Flexibility

Shade of this size almost always requires permanent installation. The Nova is one of the few large-format umbrellas in its class to offer both semi-permanent and non-permanent mounting options, delivering structural confidence without locking you into a fixed footprint.



True luxury is in the things that last.



The Giant Greenwich

Designed for upscale commercial settings, the Giant Greenwich delivers clean aluminum aesthetics with structural authority beneath the surface. Its polished finish and marine chrome-plated aluminum finial complete the silhouette with elevated precision.



Shade without a shadow of a doubt.



The Giant Greenwich

Just because you want to go big doesn't mean you need to sacrifice elegance.





Your Shade. Your Design.

Choose your proportions, finish, and fabric to shape the Giant Greenwich's clean aluminum silhouette. Finally, you can get wide coverage without sacrificing elegance.



True luxury is in the things that last.

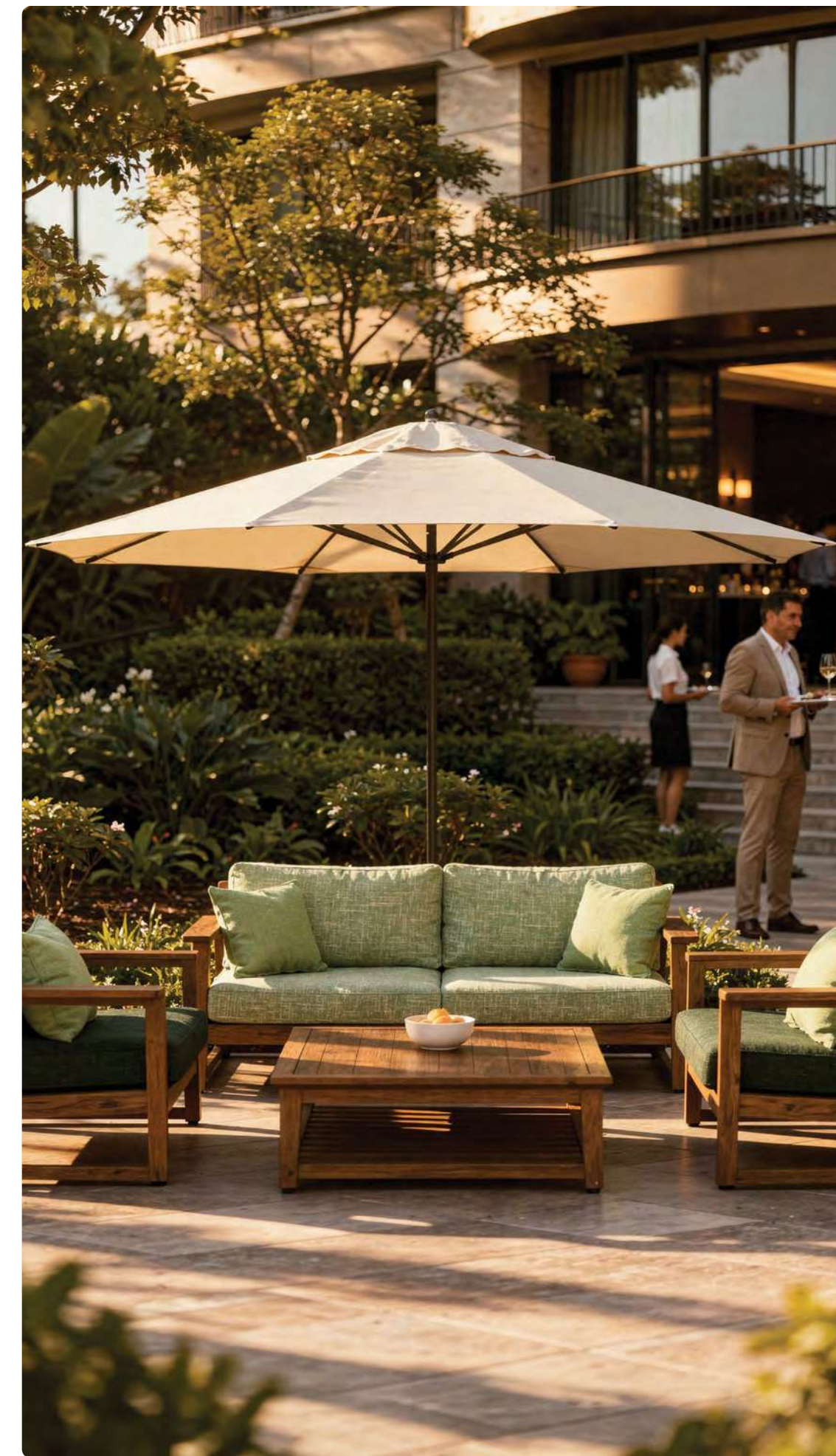


The Giant Monterey

The icon just got bigger. The Giant Monterey builds on our renowned fiberglass design with a single 2-inch aluminum center post and substantial 3/4-inch thick fiberglass ribs engineered to maintain shape while flexing intelligently in the wind.



Shade without a shadow of a doubt.



The Giant Monterey

The result is large-scale shade that balances strength with resilience. It's the Monterey you trust, expanded, reinforced, and ready to anchor demanding environments with style.





Built to Bend. Built to Last.

The Monterey's thick fiberglass ribs are designed to flex in the wind instead of fighting it. That controlled flexibility reduces stress on the frame, helping the umbrella withstand everyday wear and wind gusts of up to 35mph.



True luxury is in the things that last.



Cabanas

Our cabanas create immersive shade environments designed for resorts, pool decks, and outdoor spaces that prioritize privacy, luxury, and lasting performance.



The Marella

Resort architecture, redefined. The Marella is engineered for demanding environments, combining marine-grade components with solution-dyed acrylic fabric trusted for its strength, colorfastness, and UV resistance.



Shade without a shadow of a doubt.



The Marella

Easy to assemble and configure, the Marella elevates pool decks and beachfront properties with the kind of comfort and presence guests expect — and operators can rely on.





Outdoor Havens

Immersive shade environments for resorts, pool decks, and outdoor spaces that prioritize luxury and lasting performance.



True luxury is in the things that last.



Shade Accents

Where Frankford shade becomes uniquely yours.



Shade Accents

Classic, coastal, or cozy: it's up to you. Customize your umbrella with fringe options, valance styles, and other add-ons to shape the mood of your space.



True luxury is in the things that last.

Shade Accents

Valances



V1 Standard

Length: 6"

The flap style valance offers a clean, structured look rooted in early American and colonial design. Characterized by its flat, symmetrical panel-like sections that hang down in even intervals.



V2 Whale Tail

Length: 6"

A distinctive valance named for its dramatic center swoop that resembles the fluke of a whale's tail. The whale tail valance adds a sense of movement and elegance to any outdoor space.



V3 & V4 Classic Scallop

V3 Length: 5"

V4 Length: 3"

The scallop valance is a timeless style that adds elegance and softness. With its gently rounded, wave-like curves, this style traces its origins to classic European décor that adds charm and dimension.



V5 French Scallop

Length: 6"

Width: 6"

Characterized by its soft, curved scallops and flowing lines, this valance style evokes classic European charm and timeless sophistication.



V6 Roman Scallop

Length: 6"

Width: 6"

Originally inspired by the practical drapery used in Roman villas, its clean, horizontal folds create a tailored look that complements both traditional and contemporary spaces.



V7 & V8 Wave Scallop

V7 Length: 5"

V8 Length: 3"

A more modern take on the classic scallop. Softer curves with a more fluid contemporary look.

Shade Accents

Binding



Binding is the perfect finishing edge to any valance style. By default, our binding color is solid white unless specified otherwise in your order. You have the option to match the binding with the valance color for a seamless look, or opt for a bold statement by contrasting it with a complementary solid fabric from Sunbrella, Outdura, or Tempotest.

Fringe



Bullion Fringe

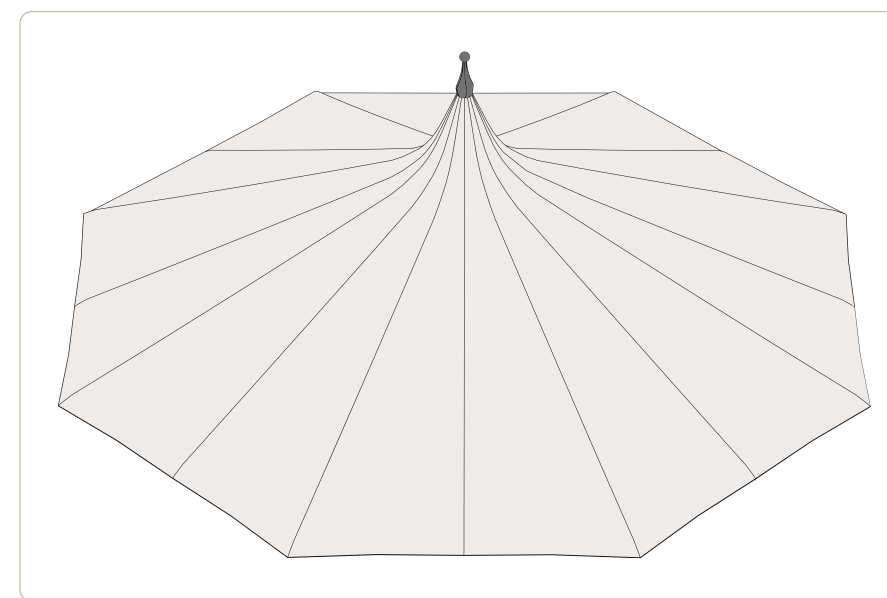
Bullion fringe offers versatility in design with options for a single-color solid twisted fringe or up to a 3-color solid twist from most Sunbrella fabrics. You can choose between a 3" or 5" length to suit your preference. This decorative element can enhance a valance or be directly added to the edge of a canopy, even without a valance.



Brush Fringe

Choose a single-color or double-color blend, available in a 1" length. Brushed fringe can be used to further accent a valance, or can be added directly to the finished edge of a canopy (without a valance).

Pagoda



Elevate the silhouette. Our Pagoda Kit transforms the profile of your Frankford umbrella, creating a refined, architectural peak that commands attention without overpowering the space.

Designed to integrate seamlessly with compatible models, the kit enhances visual presence while maintaining the structural integrity and performance you expect. It's a simple way to introduce distinctive character without replacing the umbrella you already trust.

Our Fabric Partners

Sourced from the Best in the Industry

We partner with leading textile innovators — including Recacril® by Recasens, Sunbrella®, and Outdura® — to ensure every canopy meets our standards for durability, color retention, and performance. From nanoparticle-protected fibers that resist dirt and atmospheric wear to solution-dyed acrylics engineered for fade resistance and up to 98% UV protection, these fabrics are chosen for one reason: they perform beautifully in the real world.



The Recacril® and Recsystem® canvases, manufactured by Recasens, are treated with a special technological process to ensure the lasting quality of the fabric. In this process, nanoparticles completely cover the surface of the fibers in the fabric, forming a permanent coat. After treatment, both the surface and the inside of the fabric are permanently protected against dirt build-up and adverse effects of a wide variety of atmospheric agents.

The low reactivity and high stability of the infinity treatment endows long-term protection to the fabric, especially against mildew, and provides excellent water and oil repellent.



As a known standard in outdoor living, Sunbrella™ 100% acrylic, solution-dyed fabrics are fade-proof with locked-in colors that stay beautiful for many years. A water-repellent fabric finish is incorporated in the fabric finishing process to provide excellent rain resistance. And with up to 98% tested and proven UV sun protection, Sunbrella is ideal for both everyday and heavy use.



Outdura® 100% solution-dyed acrylic fabrics, manufactured by Sattler, offer a wide range of bright colors with a high luminosity. Engineered to be fade resistant, highly dirt and water repellent, as well as mold and mildew resistant, these fabrics are long lasting. Breathable and durable, the fabrics are made to impress and easy to clean.

Grade A Stock Fabrics

Solid Colors



Grade A Stock Fabrics

Stripes • 6.4"/16.5cm



R-065 Navy & White Stripe



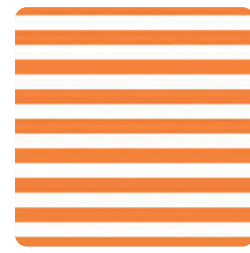
R-016 Blue & White Stripe



R-011 Turquoise & White Stripe



R-012 Red & White Stripe



R-005 Orange & White Stripe



R-055 Yellow & White Stripe



R-017 Black & White Stripe



R-024 Linen & White Stripe

Frankford Signature

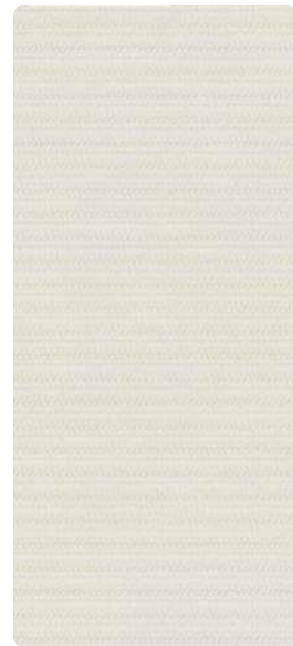
A curated expression of understated luxury, Frankford's exclusive collection of five custom neutral weaves was developed with the design community in mind. Each textile is thoughtfully engineered to deliver depth, texture, and quiet sophistication—timeless tones that complement, rather than compete. Woven exclusively for Frankford, these fabrics offer a refined foundation for elevated outdoor environments where every detail matters.



R-001 Chalkstone Linen



R-002 Shell Seeker



R-003 Pearl Dune



R-004 Sandstone Loom



R-006 Slate Harbor

Colors may vary while viewing digitally across different monitors, phone screens, print, etc.

Stripe fabrics can only be sewn horizontally. Stripe fabrics cannot be sewn vertically or used on rectangular canopies.

Grade A Fabric Comparison Chart

Sunbrella® and Outdura fabrics may not be an exact match to our stock Recacril® Marine-grade acrylic fabrics. Production shades may vary.




recacril® DESIGN LINE	sunbrella®	outdura®
R-175 Captain Navy	4646/5439/6046 Captain Navy	6003 Captain's Navy
R-172 Pacific Blue	4601/5401/6001 Pacific Blue	6002 Pacific Blue
R-169 Steel Blue	4675/5426/6075 Capri	
R-171 Turquoise	4612/5416 Aruba	6072 Aruba
R-187 Jade	4688 Basil	
R-102 Forest Green	4637/5446/6037 Forest Green	6001 Forest Green
R-177 Burgundy	4631/5436/6031 Burgundy	6004 Burgundy
R-182 Vermillion	4603/5403/6003 Jockey Red	6010 China Red
R-176 Logo Red	4666/5477/6066 Logo Red	6021 Cardinal Red
R-104 Chestnut	4622/5440 Terracotta	6035 Terracotta
R-567 Orange	4609 Orange	6062 Tangerine
R-185 Pumpkin	4677/5417 Tuscan	
R-554 Yellow	4602/5457 Sunflower Yellow	6023 Dandelion
R-156 Brown	4621/5432/6021 True Brown	6065 Kona
R-100 Beige	4628/6028 Toast	6025 Linen
R-126 Linen	4633/5422/6033 Linen	6006 Antique Beige
R-217 Ivory	4642/5453/6042 Oyster	6034 Sand
R-099 White	4604/5404/6004 Natural	6009 Natural White
R-138 Cadet Grey	4630/6030 Cadet Grey	6008 Cadet Grey
R-164 Charcoal Grey		6061 Storm Grey
R-103 Black	4608/5408/6008 Black	6005 Black

Grade A+ Non-Stocking Recacril® Fabrics

Code	Name	Type	Code	Name	Type
R-051	Manhattan	Stripe	R-278	Westminster	Stripe
R-052	Brooklyn	Stripe	R-280	Midwood	Stripe
R-054	Queens	Stripe	R-282	Pelham	Stripe
R-060	Bronx	Stripe	R-292	Teal	Solid
R-061	Grey Stripe	Stripe	R-293	Argent	Tweed
R-063	Bayside	Stripe	R-295	Honey	Tweed
R-089	Glendale	Stripe	R-296	Lagoon	Textured
R-101	Mandarin	Solid	R-300	Oat	Textured
R-107	Champagne	Solid	R-317	Beech	Solid
R-108	Vanilla	Solid	R-321	Gracia	Stripe
R-110	Lilly	Solid	R-322	Bonanova	Stripe
R-111	Camel	Solid	R-326	Cercs	Stripe
R-112	Graphite	Textured	R-327	Móstoles	Stripe
R-113	Cava	Textured	R-350	Sella	Stripe
R-114	Pearl	Solid	R-352	Serge	Stripe
R-115	Cream	Solid	R-355	Daró	Stripe
R-117	Raw	Solid	R-411	Montornés	Stripe
R-119	Duna	Textured	R-412	Motril	Stripe
R-121	Wheat	Textured	R-415	Marble	Tweed
R-122	Seashell	Solid	R-416	Nerja	Stripe
R-123	Argenta Grey	Solid	R-419	Ronda	Stripe
R-127	Moonrock	Solid	R-422	Mojacar	Stripe
R-133	Cinnamon	Textured	R-423	Cambrils	Stripe
R-139	Heather Beige	Textured	R-425	Luarca	Stripe
R-142	Emerald	Solid	R-430	Bará	Stripe
R-143	Hemp Beige	Solid	R-434	Dalias	Stripe
R-144	Maella	Stripe	R-437	Doñana	Stripe
R-145	Tenefire	Textured	R-445	Tona	Stripe
R-148	Desert	Solid	R-447	Reus	Stripe
R-149	Corn	Solid	R-465	Grecia	Stripe
R-150	Dark Grey	Textured	R-701	Yecla	Stripe
R-152	Taupe	Textured	R-707	Aridane	Stripe
R-161	Grey	Solid	R-720	Mijas	Stripe
R-162	Khaki	Solid	R-723	Javea	Stripe
R-163	Green	Solid	R-747	Begur	Stripe
R-165	Mauve	Solid	R-769	Baltic Tweed	Tweed
R-166	Foix	Stripe	R-770	Charcoal	Tweed
R-167	Tarifa	Stripe	R-772	Blue	Tweed
R-170	Admiral Blue	Solid	R-774	Smoke	Tweed
R-173	Dark Blue	Solid	R-775	Linen	Tweed
R-174	Navy Blue	Solid	R-776	Taupe	Tweed
R-178	Toast	Solid	R-779	Beige	Tweed
R-180	Sand	Slub	R-791	Beige Slub	Slub T.
R-181	Coffee	Solid	R-792	Taupe Slub	Slub T.
R-186	Silver	Solid	R-793	Linen Slub	Slub T.
R-193	Light Blue	Solid	R-794	Sand Slub	Slub T.
R-194	Ash	Textured	R-804	Mérida	Stripe
R-195	Cacao	Solid	R-808	Orotava	Stripe
R-197	Lead	Tweed	R-812	Inca	Stripe
R-198	Nickel	Solid	R-843	Breda	Stripe
R-199	Atlantic Blue	Solid	R-854	Jumilla	Stripe
R-220	Argent	Textured	R-855	Torcal	Stripe
R-222	Oak Buff	Solid	R-874	Llivia	Stripe
R-243	Tapenade	Solid	R-876	Galdana	Stripe
R-245	Navia	Stripe	R-960	Almenara	Solid
R-247	Manacor	Stripe	R-969	Valdespina	Stripe
R-248	Hunter	Solid	R-971	Trujillo	Stripe
			R-911	Baltic	Solid

Grade A+ Fabric Comparison Chart

Frankford Grade A+ Recacril® fabrics include, but are not limited to, the colors below. All non-stocking Grade A+ fabrics carry extended lead times.

			
R-114 Pearl	4651/6051 Silver		
R-127 Moonrock	4648/5461/6048 Taupe	6026 Taupe	
R-139 Heather Beige	4672/5476/6072 Heather Beige		
R-142 Emerald	4645 Seagrass Green	6065 Emerald	
R-143 Hemp Beige	4620/6020 Beige		
R-170 Admiral Blue	4678/6078 Marine Blue	6022 Royal Navy	
R-173 Dark Blue	4679/5499/6079 Ocean Blue	6041 Classic Royal Blue	
R-194 Ash	4615 Smoke		
R-198 Nickel	4644/54048/6044 Charcoal Grey		
R-243 Tapenade	4676/5425 Cocoa		
R-911 Baltic	4652/6052 Mediterranean Blue		
R-292 Teal	4643/5456/6043 Persian Green	6016 Oz Green	
R-769 Baltic Tweed	4653/6053 Mediterranean Blue Tweed		
R-770 Charcoal Tweed	4607/6007 Charcoal Tweed	6047 Tuxedo Tweed	
R-772 Blue Tweed	4617/6017 Royal Blue Tweed	6014 Catalina Blue	
R-775 Linen Tweed	4654/6054 Linen Tweed	6032 Desert Beige	



Shade Designer™

The Shade Designer™ is an immersive 3D digital space that allows you to design your own umbrella and interact with your unique creation. Choose from hundreds of fabrics, colors and patterns, multiple canopy styles, and finishing additions like various trim styles and custom binding.

Visit Shade Designer by scanning the QR Code below or visiting <https://shadedesigner.frankford.co/>



Terms & Conditions

As a condition of doing business with Frankford Umbrellas, all persons involved in the commercial purchase, sale, or resale of Frankford products shall be bound by the following terms and conditions.

Ongoing Product Improvements

We are committed to delivering high quality products. As such, our products may undergo changes to specific components over time (i.e., changes in the shape/design of a finial, crank handle, standard air vent or valance). Changes may involve slight variations from published images, descriptions, or previously purchased products.

Such updates are standard practice and do not affect the intended function or quality of the product.

We reserve the right to make these changes without prior notice, and they shall not be considered defects or grounds for a return.

Distribution

Frankford reserves the right to respond to geographic and individual market and competitive situations by applying different policies to its various dealers. Frankford also reserves the right to rescind or modify, in its sole and absolute discretion, any existing or future sales program or policy, or credit terms (if any) extended to a dealer. In addition, Frankford may terminate any authorized dealer, for any reason or no reason, in its sole and absolute discretion and without notice.

Errors

There may be errors in the prices, descriptions, or images of certain merchandise in our catalog or sales material. Frankford reserves the right to restrict orders of those items.

Liability

In no event will Frankford be liable to the dealer for any lost profits, lost savings, or any consequential, incidental, or special damages arising out of or in connection with the parties' relationship, even if Frankford has been put on notice of the possibility of such damages. Without limitation to the foregoing, under no circumstances will Frankford be liable to the dealer for punitive damages.

Frankford reserves the right to alter or modify designs, product styles, or product specifications and discontinue frames and fabrics to the entire range of manufactured and distributed products without prior notice.

Sales Tax Disclaimer

Frankford is required to charge sales tax for drop shipments into any of the states where we have nexus unless our customer is registered to collect sales tax in that state and provides required resale exemption documentation.

Tolerance

Overall dimensions may vary by up to +/- 6" depending on rib pitch, pin placement, fabric tension, and base selection.

Map Policy

MAP (Minimum Advertised Price) must be adhered to when advertising via traditional media, all online advertising, online comparison price shopping, and landing pages. Frankford reserves the right to adjust pricing at any time due to tariff implementation, raw material cost increases, and/or any other unforeseen market changes.

The following product collections may not be advertised less than 15% below the Frankford MSRP as set forth in this price index:

- Monterey Fiberglass Market Umbrella
- Catalina Modern Fiberglass Patio
- Laurel Classic Patio Umbrella

- Avalon Modern Fiberglass Beach
- Emerald Coast Classic Beach Umbrella
- Steel Plates Bases
- Resin Coated Bases
- Specialty Mounts

The following product collections may not be advertised below the Frankford MSRP as set forth in this price index:

- Eclipse® Designer Cantilever
- Aurora Aluminum/Fiberglass Premium Cantilever
- NOVA Giant Telescoping Umbrella
- Giant Series (Greenwich/Monterey) Giant Market Umbrella
- Greenwich Designer Aluminum Market Umbrella
- Marella Luxury Resort Cabana
- Galvanized Plate Bases
- Premium Aluminum Shell Bases

As in any MAP program, the intent is to uphold the integrity of Frankford products and protect the investments made by Frankford Umbrellas and its dealers and retail partners. Violating MAP requirements only serves to devalue the brand in the eyes of the consumer. These MAP requirements apply to any dealer or e-commerce partner advertising Frankford products via traditional media, including, but not limited to, newspaper, mailers, inserts, circulars, magazines, catalogs, television, radio, and social media. In addition, MAP requirements apply to any dealers selling or advertising Frankford products online and/or having a checkout/cart system.

Shade Designer Fabric Disclaimer

Important Notes on Fabric Pairing & Alignment

When pairing two different fabrics on a single umbrella—for example, one fabric on the topside and another on the underside—please note that one or both fabrics may be visible through the opposite side. This translucency is a natural characteristic of the materials and is not considered a defect.

Additionally, due to the construction and weight of a single air vent, the underside fabric cannot be applied to the underside of single vent panels. As a result, the topside fabric color and/or pattern will be visible on the underside of full single air vent when viewing the umbrella from below.

Any visibility of one fabric through the other does not qualify for replacement, redesign, or credit at no cost. We encourage customers to keep this in mind when selecting fabric combinations.

Fabric Alignment

Please be advised that in the manufacturing of custom umbrella canopies, exact alignment of abstract, printed, geometric, or patterned fabrics across individual panels cannot be guaranteed. Due to natural limitations in the cutting and sewing process, variations in panel alignment will occur and should be expected.

If precise alignment of artwork across panels is required, we recommend submitting artwork for digital printing. This allows our production team to make the necessary adjustments to achieve the intended design alignment.

Thank you for your understanding.

Residential Warranties

Wind Damage

Wind ratings do not form part of, nor fall under, any of Frankford Umbrellas' warranties. Wind ratings are intended as a guide to the relative strength of the umbrellas only and tested at their optimal positions. Wind can be extremely variable, depending on the surroundings, elevation, gusts, etc. In high wind or sudden extreme weather conditions, all umbrellas should be closed and secured immediately, regardless of size, weight, or base weight and never be left unattended or tilted in the open position.

Frankford will not be held responsible for damage to your umbrella, furniture, or property. Frankford Umbrellas' 2026 MSRP and Catalog contain minimum recommendations for necessary weight, but this can vary depending on conditions.

Elevated/Rooftop

Warranties and published wind ratings do not apply to any umbrella on a rooftop or an elevated patio above the ground level of the property

10 Year Fabric

Frankford offers 9 oz. marine-grade solution-dyed acrylic fabric from several mills, including Sunbrella®, Outdura®, and RECASENS. All marine-grade acrylic fabrics we use carry a warranty of 10 years from the original date of purchase. All upholstery-grade fabrics we use carry a warranty of 5 years from the original date of purchase. The warranty protects against the significant loss of strength and color in normal atmospheric conditions. The product must be properly installed, maintained, and under normal use and environment. This warranty does not cover damage caused by contact with foreign objects, abuse, negligence, vandalism, burns of any kind, improper cleaning techniques, normal wear, perforations, weather soiling, environmental pollution stains, natural disasters, rot, mildew, or acts of nature. Damage caused by the storage method or location used by clients is not covered.

To ensure our products' longevity, we recommend closing your umbrella and securing it with a tie band in high winds. In addition, be sure the fabric is pulled away from the ribs as outlined below. High winds will cause the umbrella fabric to rub together, causing friction, which can result in premature thinning of the fabric, discoloration, and possible pinholes over extended use. We strongly suggest the use of a protective cover or safely storing the umbrella until the winds and harsh weather subside. Damage of this nature is not covered under warranty.

When opening and closing the umbrella, the user must be sure all fabric is pulled away from the ribs to prevent unnecessary rubbing of the fabric against the frame or hardware. This could result in premature wearing or holes in the fabric. Damage of this nature is not covered under warranty.

5 Year Frame

Frankford warrants the crank and auto tilt mechanisms in the MONTEREY for a period of 5 years from the original date of purchase. This warranty includes manufacturer defects of crank handles, crank axles, auto tilts, push-button tilts, and para-cord. Frankford warrants the frame structure of the ECLIPSE®, AURORA, NOVA, MARELLA, GIANT SERIES, GREENWICH, MONTEREY, CATALINA, and AVALON for a period of 5 years from the original date of purchase. This warranty includes manufacturer defects to the notch, runner, center pole, and skeleton structure. This warranty does not include damages sustained to these umbrellas if operated improperly, while in any degree of tilt, or if left unattended.

Before opening any umbrella, gently "fluff" the umbrella ribs (spread them apart by hand) first, and then begin to open the umbrella. If you feel any impingement whatsoever during

3 Year Powder Coat / Finish

Frankford warrants all powder coat finishes on aluminum masts in ECLIPSE®, AURORA, NOVA, MARELLA, GIANT SERIES, GREENWICH, MONTEREY, CATALINA, and LAUREL for a period of 3 years from the original date of purchase. This warranty includes chipping, peeling, flaking, bubbling, and fading of the powder coat finish on the aluminum masts only.

1 Year Frame / Structure

Frankford warrants the frame structure of the LAUREL, EMERALD COAST, FC101, SHADESTAR, LIFE GUARD, and CB87 for a period of 1 year from the original date of purchase. This warranty includes manufacturer defects to the notch, runner, center pole, and skeleton structure. Frankford warrants all umbrella bases for a period of one 1 year from the original date of purchase.

1 Year Umbrella Base

Frankford warranty covers manufacturing defects only. It does not cover breakage due to contact with foreign objects, chipping of the finishes, crumbling of concrete, or any damage associated with transporting the base.

3 Year Fiberglass Replacement

Non-warrantable damage to fiberglass ribs from the MONTEREY collection, Frankford offers a free replacement program for 3 years from the original date of purchase. Shipping charges are not included in this program.

RUST - is a natural part of the aging process for all steel and iron-based materials; therefore it is not considered a defect and is not covered under any of Frankford Umbrellas' warranties. Steel bases and mounts are designed to require minimum maintenance and should be kept clean and well maintained.

Galvanized steel will show unavoidable imperfections due to the finishing process and therefore, must be accepted in the condition in which it is received depending on conditions.

SEASIDE AND INDOOR/OUTDOOR POOL USE - Salt and chlorides can accumulate on the powder coat finishes and on raw material finishes, such as Brushed Silver (MS) (umbrella specific) and Platinum (SR), leading to premature finish failure.

Failure or neglect to make needed cleanings on powder coat finishes may cause paint to blister, flake, or bubble, and such failure will void the limited warranty.

Failure to maintain umbrella and base finishes may cause aluminum and metals to pit, oxidize, or corrode. Such failure will void all warranties.

Frankford Umbrellas' warranties do not cover damage to any umbrellas or umbrella bases related to extreme weather, abuse, misuse, or any damage that occurs as a result of contact with the ground or any other foreign object due to sudden and severe weather events or other extreme acts of nature.

Frankford Umbrellas' warranties are only applicable to products that are properly secured to Frankford bases or anchoring systems equal to or greater than recommended by Frankford. Failure to properly secure Frankford Umbrellas to Frankford bases equal to or greater than recommended will void all warranties. If warrantable damage occurs, Frankford will refinish, replace, or repair any item in this category at its own discretion.

Responsibility Disclaimer

In the event any warrantable or non-warrantable damage occurs to our products while in the possession of the customer, installer, or registered dealer, Frankford Umbrellas is not responsible for any costs associated with repairing such damage—including, but not limited to, travel expenses, tools, labor, or related service charges. These expenses are the sole responsibility of the party in possession of the product at the time the damage occurred.

Commercial Warranties

Wind Damage

Wind ratings do not form part of, nor fall under, any of Frankford Umbrellas' warranties. Wind ratings are intended as a guide to the relative strength of the umbrellas only and tested at their optimal positions. Wind can be extremely variable, depending on the surroundings, elevation, gusts, etc. In high wind or sudden extreme weather conditions, all umbrellas should be closed and secured immediately, regardless of size, weight, or base weight and never be left unattended or tilted in the open position.

Frankford will not be held responsible for damage to your umbrella, furniture, or property. Frankford Umbrellas' 2026 MSRP and Catalog contain minimum recommendations for necessary weight, but this can vary depending on conditions.

Elevated/Rooftop

Warranties and published wind ratings do not apply to any umbrella on a rooftop or an elevated patio above the ground level of the property.

7 Year Fabric

Frankford offers 9 oz. marine-grade solution-dyed acrylic fabric from several mills, including Sunbrella®, Outdura®, and RECASENS. All marine-grade acrylic fabrics we use carry a warranty of 7 years from the original date of purchase. All upholstery-grade fabrics we use carry a warranty of 5 years from the original date of purchase. The warranty protects against the significant loss of strength and color in normal atmospheric conditions. The product must be properly installed, maintained, and under normal use and environment. This warranty does not cover damage caused by contact with foreign objects, abuse, negligence, vandalism, burns of any kind, improper cleaning techniques, normal wear, perforations, weather soiling, environmental pollution stains, natural disasters, rot, mildew, or acts of nature. Damage caused by the storage method or location used by clients is not covered.

To ensure our products' longevity, we recommend closing your umbrella and securing it with a tie band in high winds. In addition, be sure the fabric is pulled away from the ribs as outlined below. High winds will cause the umbrella fabric to rub together, causing friction, which can result in premature thinning of the fabric, discoloration, and possible pinholes over extended use. We strongly suggest the use of a protective cover or safely storing the umbrella until the winds and harsh weather subside. Damage of this nature is not covered under warranty.

When opening and closing the umbrella, the user must be sure all fabric is pulled away from the ribs to prevent unnecessary rubbing of the fabric against the frame or hardware. This could result in premature wearing or holes in the fabric. Damage of this nature is not covered under warranty.

The warranty, if applicable, does not cover labor frames, systems, or installation supplied by the dealer or reseller. The replacement fabric canopy is covered for the time remaining in the original warranty and does not activate a new 7-year or 5-year warranty.

3 Year Frame

Frankford warrants the frame structure of the ECLIPSE®, AURORA, NOVA, MARELLA, GIANT SERIES, GREENWICH, MONTEREY, CATALINA, and AVALON for a period of 3 years from the original date of purchase. This warranty includes manufacturer defects to the notch, runner, center pole, and skeleton structure. This warranty does not include damages sustained to these umbrellas if operated improperly, while in any degree of tilt, or if left unattended.

Before opening any umbrella, gently "fluff" the umbrella ribs (spread them apart by hand) first, and then begin to open the umbrella. If you feel any impingement whatsoever during opening, halt opening and repeat this process until there is no more resistance.

2 Year Crank Mechanism

Frankford warrants the crank mechanisms in the MONTEREY for a period of 2 years from the original date of purchase. This warranty includes manufacturer defects of crank handles, crank axles, and para-cord.

3 Year Powder Coat / Finish

Frankford warrants all powder coat finishes on aluminum masts in ECLIPSE®, AURORA, NOVA, MARELLA, GIANT SERIES, GREENWICH, MONTEREY, CATALINA, and LAUREL for a period of 3 years from the original date of purchase. This warranty includes chipping, peeling, flaking, bubbling, and fading of the powder coat finish on the aluminum masts only.

1 Year Frame / Structure

Frankford warrants the frame structure of the LAUREL, EMERALD COAST, FC101, SHADESTAR, LIFE GUARD, and CB87 for a period of 1 year from the original date of purchase. This warranty includes manufacturer defects to the notch, runner, center pole, and skeleton structure. Frankford warrants all umbrella bases for a period of one 1 year from the original date of purchase.

1 Year Umbrella Base

Frankford warranty covers manufacturing defects only. It does not cover breakage due to contact with foreign objects, chipping of the finishes, crumbling of concrete, or any damage associated with transporting the base.

3 Year Fiberglass Replacement

Only for retail warranty. Non warrantable damage to fiberglass ribs from the MONTEREY collection, Frankford offers a free replacement program for 3 years from the original date of purchase. Shipping charges are not included in this program.

RUST - is a natural part of the aging process for all steel and iron-based materials; therefore it is not considered a defect and is not covered under any of Frankford Umbrellas' warranties. Steel bases and mounts are designed to require minimum maintenance and should be kept clean and well maintained.

Galvanized steel will show unavoidable imperfections due to the finishing process and therefore, must be accepted in the condition in which it is received. depending on conditions.

SEASIDE AND INDOOR/OUTDOOR POOL USE - Salt and chlorides can accumulate on the powder coat finishes and on raw material finishes, such as Brushed Silver (MS) (umbrella specific) and Platinum (SR), leading to premature finish failure.

Failure or neglect to make needed cleanings on powder coat finishes may cause paint to blister, flake, or bubble, and such failure will void the limited warranty.

Failure to maintain umbrella and base finishes may cause aluminum and metals to pit, oxidize, or corrode. Such failure will void all warranties.

Frankford Umbrellas' warranties do not cover damage to any umbrellas or umbrella bases related to extreme weather, abuse, misuse, or any damage that occurs as a result of contact with the ground or any other foreign object due to sudden and severe weather events or other extreme acts of nature.

Frankford Umbrellas' warranties are only applicable to products that are properly secured to Frankford bases or anchoring systems equal to or greater than recommended by Frankford. Failure to properly secure Frankford Umbrellas to Frankford bases equal to or greater than recommended will void all warranties. If warrantable damage occurs, Frankford will refinish, replace, or repair any item in this category at its own discretion.

Responsibility Disclaimer

In the event any warrantable or non-warrantable damage occurs to our products while in the possession of the customer, installer, or registered dealer, Frankford Umbrellas is not responsible for any costs associated with repairing such damage—including, but not limited to, travel expenses, tools, labor, or related service charges. These expenses are the sole responsibility of the party in possession of the product at the time the damage occurred.

Shipping and Returns

Shipping and Returns

GROUND / FREIGHT DELIVERIES - Frankford would like to ensure the highest level of service. All of our products are made to order and shipped directly from us to you. Because of this, shipping times often vary depending on what product is ordered, what fabric is used (Grades A or A+, B-F), the quantity ordered, and the time of year the order is placed. All small package and small quantity orders will be shipped using parcel companies (USPS, UPS, FedEx, or other) unless otherwise specified. Some of our larger items and larger quantity shipments must be shipped with an LTL trucking company. Additional charges may be incurred for the following services: Lift Gate Service, Residential Delivery, Call Before Delivery, Express Delivery, Weekend/Holiday Delivery, Guaranteed Delivery, Redelivery, Change of Address, for exceeding delivery window.

Frankford will not be responsible for any express shipping costs or order cancellations unless we have guaranteed a specific delivery date in writing. No verbal guarantees will be honored. Customer is responsible for additional charges added at the time of delivery (Inside Delivery, Lift Gate, Change of Address, etc.). FREIGHT QUOTES ARE ONLY VALID FOR 14 DAYS.

Frankford is not responsible for duties, taxes or providing a broker for International LTL shipments. This is the sole responsibility of the end-user or dealer.

Scheduling

Deliveries may be disrupted by natural disasters and other factors beyond our control. In these cases, Frankford shall not be liable for any damages caused by a failure to deliver or delays in delivery.

Orders may be delayed due to lack of information on order form. Information includes, but is not limited to, shipping address, company/contact name, phone number, shipping method/instructions, item number/description. Frankford will not be responsible for charges incurred due to lack of information provided. For shipping quotes/inquiries, email a customer service representative.

Cancellations

No cancellations, changes, additions, or holds will be accepted on any order for which materials have been ordered or produced.

- Cancellations and/or changes of product or shipping dates on EARLY BUY orders must be received in writing within 15 days of the order date.
- Cancellations and/or changes of product or shipping dates on ALL OTHER orders must be received in writing within 1 business day of the order date.

Shortages

It is the dealer's/customer's responsibility to inspect all merchandise and to file a claim with the carrier in the event of product shortage. Make a notation on the Bill of Lading as to the number of cartons short. Frankford must also be notified within 24 hours of any shortages. File the claim with the delivery carrier immediately. No claim for shortages, damaged items, or errors will be honored unless it is made in writing on the Bill of Lading immediately upon receipt of shipment. Notwithstanding anything to the contrary in this agreement, failure to make a claim on the Bill of Lading will constitute a waiver of any right to a refund or credit.

In addition, it is the dealer's/customer's responsibility to inspect all merchandise to ensure they have received the correct product, fabric colors and frame finishes. Any discrepancies must be reported in writing within 48 hours of receipt.

Concealed Damages

If damage is discovered when unpacking the merchandise, immediately mark the damaged area and submit a written request for the carrier to inspect.

- Do not remove the merchandise from the original carton until the carrier inspection is complete.
- If the merchandise was shipped using Frankford's carrier and account, it is the dealer's/customer's responsibility to notify Frankford immediately and to provide all proper documentation so that a claim can be filed.

Visible Damages

It is the dealer's/customer's responsibility to check the merchandise for visible damage and file a claim with the carrier if the shipment was made using the dealer's carrier account. Request a claim form from the delivering carrier and file your claim immediately.

- **DO NOT REFUSE DAMAGED SHIPMENTS.**
- If the shipment was made using Frankford's carrier and account, it is the dealer's/customer's responsibility to check the merchandise and notify Frankford Umbrellas within 24 hours of delivery so that a claim can be filed.
- In either situation, make a notation on the Bill of Lading as to the nature and extent of the damage, take photos, check carton count, and obtain a signature from the carrier's agent.
- Failure to provide this information within 24 hours of delivery may result in the carrier refusing to honor the claim, and Frankford will not, under this circumstance, be liable for damage sustained in transit.

Purchaser/Client Transit and Installation

Frankford is not responsible or liable for any damages that occur during transit to a customer's home or any location by the purchaser or third-party delivery services.

- Frankford is not responsible or liable for any damages incurred when the customer is transporting their product from the location of purchase to their home.
- Frankford is not responsible or liable for mechanical damages incurred during installation before the product is fully installed and operational.
- Frankford, under no circumstances, will be responsible for punitive damages to persons or property due to an improper or faulty installation.

Grade A Returns

All requests for returns of stock merchandise must be made within 7 days of receipt of merchandise. Returns will not be accepted without a written Return Authorization (RA#) from the factory. It is the dealer's/customer's responsibility to follow routing instructions. Please email a request for an RA#. Your request must include the following information:

- Company name, contact name and number
- The Frankford Umbrellas invoice and/or acknowledgment
- The item number,, number of units to be returned, and carton total
- The reason for the return
- Which carrier will be returning the items and the date of the shipment

Any stock item that is returned for credit is subject to a 25% restocking fee (and must be properly packaged and in resalable condition) plus inbound and outbound freight charges.

PLEASE NOTE: ECLIPSE®, AURORA, NOVA, MARELLA, G-SERIES, and GREENWICH are considered custom orders. Returns will not be accepted.

Grade A+/B-F Returns

Umbrellas made with Grade A+ through F fabrics and/or that have printing are not subject to a refund or credit. These items are manufactured or printed to the dealer's/customer's specifications, and as such, may not be returned. No cancellations, changes, additions, or holds will be accepted on any order for which materials have been ordered or produced.

NOTE: ECLIPSE®, AURORA, NOVA, MARELLA, G-SERIES, and GREENWICH are considered custom orders. Returns will not be accepted.

Care and Maintenance

Fabric Care

Recacril® 9 oz. marine-grade acrylic fabric is treated with the Infinity Process, a highly technological finish providing Recacril® with long-lasting protection against mold and mildew, excellent water and oil repellency, and protection from the sun. However, the accumulation of dust, pollution particles, foreign organic materials, and general dirt can damage this protection, shortening the life of the Recacril®.

The most effective method for maintaining Recacril® is to clean the canvas once a month with water, using a low-pressure hose. It is very important that after cleaning with water, the canvas be allowed to completely dry before rolling or storing your umbrella. If for any reason you must roll and/or store a wet umbrella, it must be unrolled and opened as soon as possible to dry. In times of continuous rain, it is advisable to keep the umbrella rolled and stored.

If periodic washing with water is done, in most environments, you should only need to do a more thorough cleaning every 2-3 years.

Fabric Crazing/Marbling

Crazing is an inherent characteristic of all solution-dyed acrylic fabrics and is caused by folding or creasing of the fabric during production or installation.

- Crazing lines appear as white lines on dark-colored fabrics when frontlit, and dark lines on light-colored fabrics when backlit. The primary contributors to crazing are the resins added in the final stages of manufacturing. These resins add stiffness so the fabric lies flat during sewing, which is critical for the manufacturing process.
- These resins can be viewed as an industrial fabric starch with a specific end purpose. Crazing does not affect the performance or characteristics of RECASENS, Sunbrella®, Outdura®, or other acrylic fabrics. The fabric remains water repellent as well as stain and mildew resistant, and the lines will diminish over time with exposure to the elements.

Casual Care and Cleaning

Recacril® is highly resistant to the growth of fungus, mold, and mildew. However, these can grow on embedded dirt. To clean these stains, follow these more intensive cleaning procedures.

- Brush off dust and dirt with a soft brush. NEVER brush with stiff brushes as this can damage the fabric finish.
- Prepare a solution with 10% household bleach, 20% solvent-free neutral detergent (free & clear detergents), and 70% water.
- Apply the solution to the fabric, allowing it to remain between 15 and 20 minutes maximum.
- Rinse with clean water several times. Any bleach residues remaining on the canvas, combined with the sun, could damage the fabric and stitching.
- Let air dry and do not close the umbrella until canvas is completely dry.
- Repeat the process if necessary.

Base Care

Do not let dirt build up on the bases. Bases should be cleaned with mild soap and water. Seasonal touch-up of any scratches, chips, occasional rust seepage from crevices, or hidden or unfinished surfaces inherent in some designs is all that is required. Never leave bases standing in water. To keep your bases looking their best, you may wish to store them when not in use for an extended period of time. Finishes will vary slightly depending on the final process and raw materials on which they are applied.

Powder Coated Steel Base/Stem

Upon receiving your powder coated steel base and/or mount, apply a rust inhibitor to the inside of the steel stem. The stems are powder coated steel: however, the inside of the stem lacks total coverage, exposing the raw steel and accelerating natural deterioration.

Preventive Maintenance Pro Tip

Ferrous metals are naturally in the air and can adhere and etch in to any surface. These small particles can rust on the surface giving an unsightly look. To combat this, before setting up your base, rinse with clean, fresh water, towel dry or air dry, and apply WD-40 Specialist Long-Term Corrosion Inhibitor to the entirety of the base. Repeat this twice a year to ensure the longevity of your base.

Periodically hose powder coated steel bases, steel umbrella stems, and steel mounts with warm, fresh water and a mild detergent. This should be a part of a weekly routine to ensure the longevity of all steel products.

Visual Rust

Rinse the steel product with warm water and a mild detergent to determine its origin. Once the damaged area has been discovered, scrub off the visible rust using warm water, white vinegar, and a stainless steel wire brush (steel wire brushes will leave further iron deposits on the surface). Once rust (orange oxidation) is visibly gone, apply a thin coat of Rust-Oleum® Stops Rust® Rust Inhibitor Spray to the affected area. Then apply the closestmatching Rust-Oleum® paint available at your local hardware store.

Rusty water stains may appear from rusting ferrous metal deposits on the surface, not the actual product. The most common place this would occur is from the umbrella stem/threads. Remove the stem and clean with warm, fresh water; white vinegar; and a soft sponge or brush. Dry off with a towel, apply WD-40 Specialist Long-Term Corrosion Inhibitor to the threads of the umbrella stem and female receiving cup of the stem.

Vinyl Care

The most effective method for maintaining Frankford's heavy-gauge vinyl is to clean the vinyl once a month with water, using a garden hose to prevent the accumulation of dust, pollution particles, foreign organic materials, and general dirt stains. For more embedded stains, brush the loose dirt away with a soft brush and rinse the vinyl with a garden hose. Use a vinyl cleaner, sponge, and lukewarm water to scrub away stubborn stains. Do not use dish detergent as this will dry out the vinyl and expedite the aging process of the vinyl material.

Cleaning ABS Plastics

Frankford uses electroplating on our plastic crank boxes for Brushed Silver (MS) and Platinum (SR) finishes. This is to protect the plastic parts from corrosion. The plating process will also increase the wear resistance and strength of the product. To clean these specific finishes, follow the methods below.

TOOTHPASTE - Removes light scuffs and cloudiness.

- Spread a thin layer of opaque white (no gel) toothpaste on the surface of the chrome plating. Rub the toothpaste with a soft, clean cloth in small circular and swirling patterns (little to no force).
- Using a fresh, dry cloth or microfiber, wipe away the toothpaste, revealing a shiny, clean surface.

WHITE VINEGAR - General Cleaning

- Pour undiluted distilled white vinegar in to a spray bottle and begin to spray the surface until saturated.
- Using a fresh, dry cloth or microfiber, wipe while simultaneously buffing away the vinegar.

Contact Us

Talk directly to the people who craft it. We're ready to assist with product selection, technical questions, project support and more. Whether you're choosing umbrellas to represent your brand or to shade your backyard, we're here to help.

Website

<https://www.frankfordumbrellas.com/>

Phone Number

856-222-4134

Email

info@frankfordumbrellas.com

Address

110 Gaither Drive
Mt. Laurel, New Jersey 08054

Instagram

<https://www.instagram.com/frankfordshade>

LinkedIn

<https://www.linkedin.com/company/frankford-umbrellas>

Facebook

<https://www.facebook.com/FrankfordShade>





TRUE

LUXURY

is in the things that last.

